

A photograph of a dense forest with tall, thin trees and green foliage. A dark blue rectangular overlay covers the center of the image, containing white text.

CALN TOWNSHIP PARKS

# RIPARIAN BUFFER PLANTING

Presented by  
Abbey Swan and Brett Klukan



# Presentation Outline

## TOPICS FOR TODAY

Penn State Master Watershed Steward Program

What is a riparian buffer?

Benefits of installing buffers

Caln stream health

Riparian buffer planting in township parks



---

# Penn State Master Watershed Steward Program

## TRAINING PROGRAM

Initial training - 40 hours (land use impacts on watersheds, geology and groundwater, climate, drinking water and wastewater, wildlife, restoration, best management practices, stream monitoring, communication, etc.)

10 training hours per year in subsequent years

## VOLUNTEER REQUIREMENTS

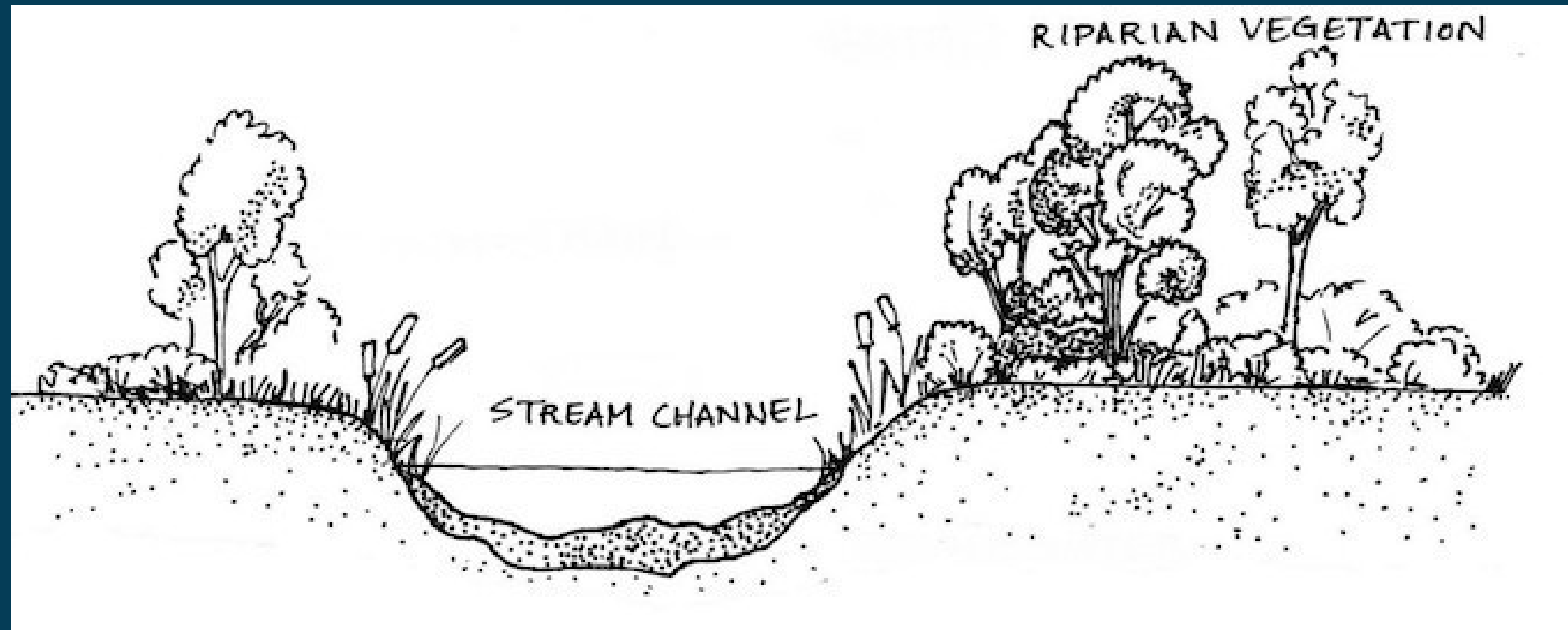
50 hours of volunteering (first year), 20 hours subsequent years

Volunteering includes public outreach, riparian buffer and rain garden plantings, stream health monitoring, stream cleanups, etc.



# What is a riparian buffer?

**Riparian buffer - The permanent, vegetated strip adjacent to streams, lakes, ponds and wetlands.**





# Benefits of riparian buffers:

1

SHADES AND COOLS  
WATER, BENEFITS  
AQUATIC ORGANISMS  
AND FISH

4

PROVIDES WILDLIFE  
CORRIDORS

2

ADDS TO STREAM BANK  
STABILIZATION (HELPS  
STOP EROSION)

5

ENHANCES  
BIODIVERSITY OF  
PLANTS, INSECTS, AND  
ANIMALS

3

INTERCEPTS RUNOFF  
CONTAINING NUTRIENTS,  
PESTICIDES, AND OTHER  
NONPOINT POLLUTION

6

INCREASES  
GROUNDWATER  
INFILTRATION  
(WHICH HELPS WITH  
FLOODING)



# Caln Township Stream Health



Image: Valley Run Erosion in Caln Park



VALLEY RUN AND BEAVER CREEK - IMPAIRED



Image:  
Lloyd Dog Park  
Bank Damage



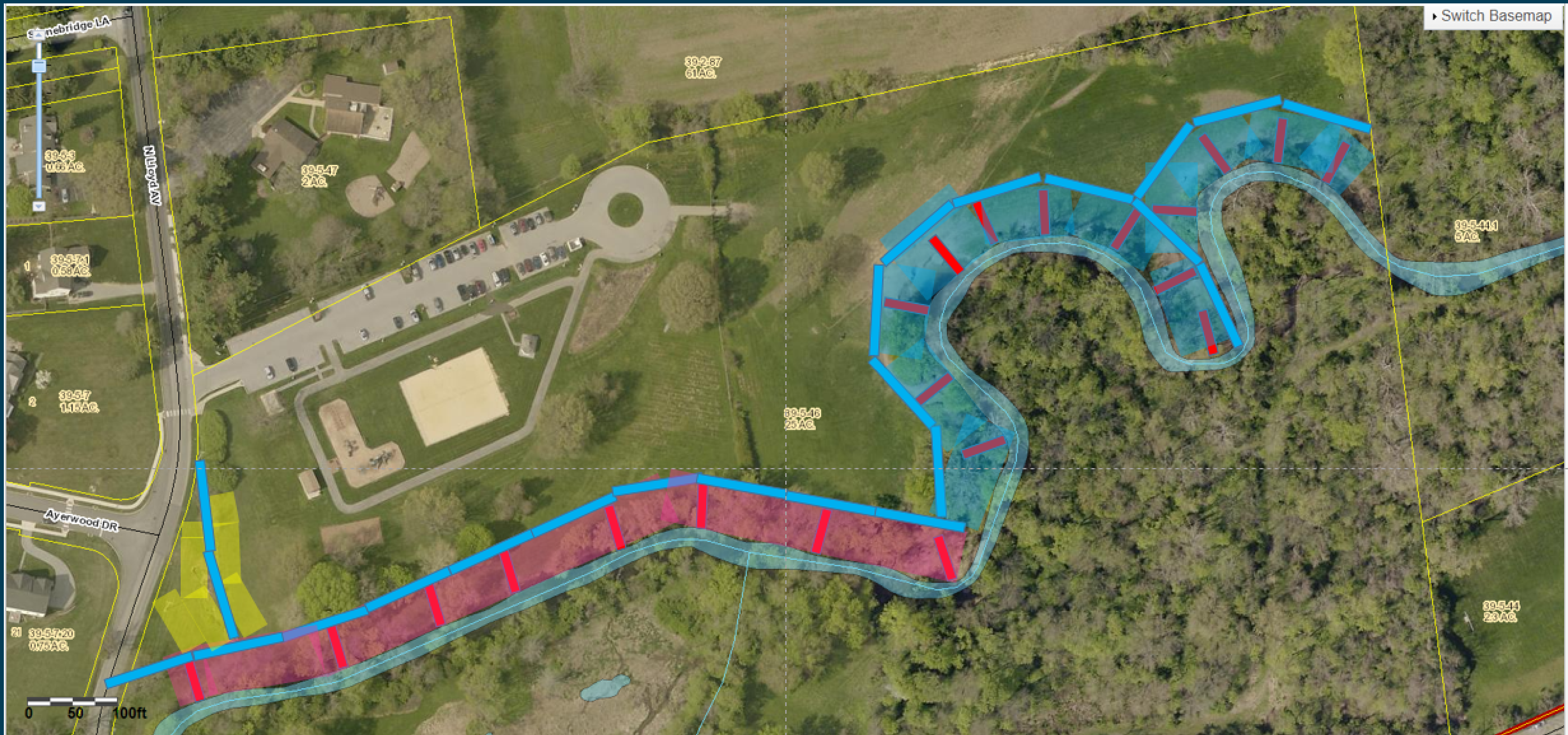
# Planting buffers in Caln Township Parks

- With assistance from:
  - Chester County Conservation District
  - Keystone 10 Million Trees Partnership (aims to plant 10 Million Trees in PA by 2025)
  - Restore Our Roots (Downingtown nonprofit)
- Requested 500 trees and shrubs
- Native tree and shrub species like arrowwood, basswood, persimmon, and pin oak (easy to maintain and provide habitat)
- Master watershed stewards plus local volunteers for the planting
- Protective tree tubes prevent deer browse and damage from flooding
- Tentative planting date - November 6th



Images:  
MWS riparian buffer  
planting in Elverson  
March 2021







---

# Thank you!

## ADDITIONAL RESOURCES:

### PENN STATE EXTENSION STREAMS AND RIVERS ARTICLES

<https://extension.psu.edu/water/watershed-protection-and-restoration/streams-and-rivers>

### KEYSTONE 10 MILLION TREES PROGRAM

<http://www.tenmilliontrees.org/>

### CHESTER COUNTY CONSERVATION DISTRICT

<https://www.chesco.org/205/Conservation-District>

