

# CALN TOWNSHIP, PENNSYLVANIA CHESTER COUNTY MUNICIPAL DRIVE BRIDGE REPLACEMENT

## ACT NO. 181

ARRO CONSULTING, INC. HEREBY STATES THAT, PURSUANT TO THE PROVISIONS OF ACT NO. 121 OF 2008 OF THE PENNSYLVANIA LEGISLATURE, IT HAS COMPLIED WITH THE DESIGNER'S DUTIES PROVISIONS OF THE ACT IN PREPARING THESE DRAWINGS REQUIRING EXCAVATION OR DEMOLITION WORK AT SITES WITHIN THE POLITICAL SUBDIVISION(S) SHOWN ON THE DRAWINGS.

ARRO CONSULTING, INC. DOES NOT MAKE ANY REPRESENTATION, WARRANTY OR ASSURANCE OR OTHERWISE GUARANTEE THAT THE INFORMATION RECEIVED PURSUANT TO SAID ACT FROM THE FACILITY OWNER, AS THE TERM FACILITY OWNER IS DEFINED IN THE ACT, AS REFLECTED ON THESE DRAWINGS IS CORRECT OR ACCURATE.

DATE: 4/15/2022 BY: CARROLL ENGINEERING

PA ONE CALL SERIAL NO: 20220531569

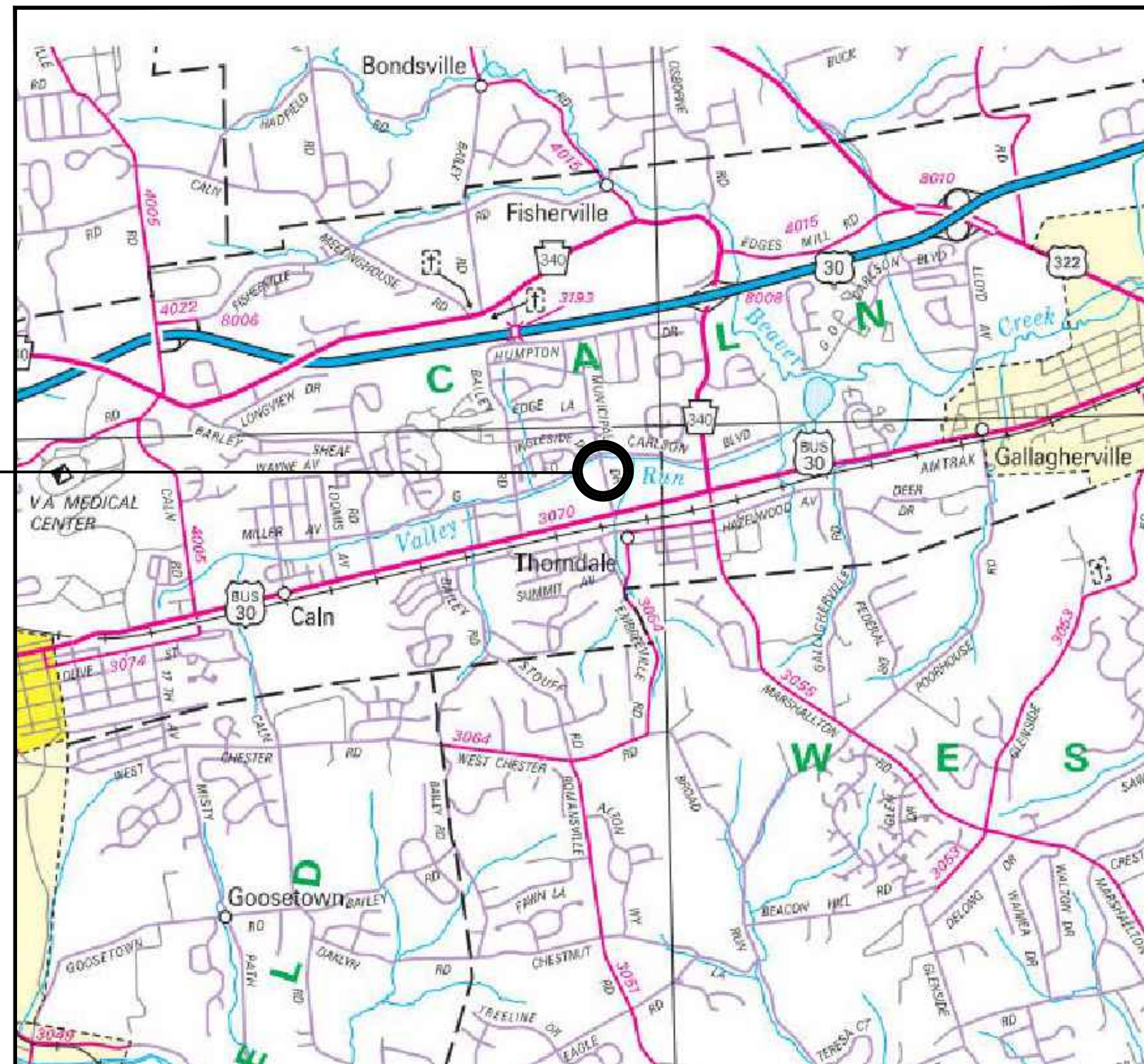


THE REFERENCED ACT REQUIRES NOTIFICATION BY DESIGNERS, CONTRACTORS, OR ANY OTHER PARTY INVOLVED IN DISTURBING THE EARTH'S SURFACE ANYWHERE IN THE COMMONWEALTH.

## UTILITY LIST

CALN TOWNSHIP 253 MUNICIPAL DR THORNDALE, PA. 19372 SCOT GILL sgill@calntownship.org	TRANSCONTINENTAL GAS/WILLIAMS GAS 99 FARBER RD PRINCETON, NJ. 08540 JUSTIN ADAMS justin.adams@williams.com
COMCAST 1004 CORNERSTONE BLVD DOWNTOWN, PA. 19335 TOM RUSSO tom_russo@cable.comcast.com	VERIZON PENNSYLVANIA LLC 1050 VIRGINIA DR FORT WASHINGTON, PA. 19034 DARLINE LEPPERD JOHNSON
PECO ENERGY C/O USIC 450 S HENDERSON RD SUITE B KING OF PRUSSIA, PA. 19406 NIKKIA SIMPKINS NIKKIASIMPKINS@USICLLC.COM	CROWN CASTLE 3200 HORIZON DR, KING OF PRUSSIA, PA. 19406 (877)486-9377
PENNSYLVANIA AMERICAN WATER 171 WEST JOHNSON HIGHWAY NORRISTOWN, PA 19401 JAMES GABLE, SR. MANAGER JAMES.GABLE@AMWATER.COM	

PROJECT  
LOCATION  
39° 59' 54.0" N  
75° 45' 16.7" W



**LOCATION MAP**  
0 400' 800' 1600' 2400'  
SCALE: 1" = 800'

## TOWNSHIP MEMBERS

PAUL MULLIN \_\_\_\_\_ PRESIDENT  
JANE KENNEDY \_\_\_\_\_ VICE-PRESIDENT  
JOSHUA YOUNG \_\_\_\_\_ COMMISSIONER  
LORRAINE TINDARO \_\_\_\_\_ COMMISSIONER  
MARK EVENS \_\_\_\_\_ COMMISSIONER

## DRAWING INDEX

1 OF 6	TITLE SHEET
2 OF 6	GENERAL NOTES AND SUMMARY OF QUANTITIES
3 OF 6	EXISTING FEATURES & DEMOLITION PLAN
4 OF 6	SITE PLAN
5 OF 6	PROFILE, ELEVATION, & TYPICAL SECTION
6 OF 6	STRIPING & GRADING PLAN

## ALSO INCLUDED

1 OF 4	GP-11 & E&S PLAN & PROFILE
2 OF 4	GP-3 & E&S GRAVELBAR REMOVAL
3 OF 4	E&S NOTES
4 OF 4	E&S DETAILS
CT1 - CT11	CONTECH ENGINEERED SOLUTIONS, LLC - PRECAST BRIDGE PLANS

CLASSIFICATION OF EARTHWORK FOR STRUCTURES	RC-11M	06-01-10
BACKFILL AT STRUCTURES	RC-12M	11-01-22
OVERLAY TRANSITIONS AND PAVING NOTCHES	RC-28M	11-01-22
SUBSURFACE DRAINS	RC-30M	11-30-21
SLOPE PROTECTION	RC-40M	02-08-19
INLET TOPS, GRATES AND FRAMES	RC-45M	02-19-21
INLET BOXES	RC-46M	02-19-21
TYPE 31 STRONG POST GUIDE RAIL	RC-51M	11-30-21
CURBS AND GUTTERS	RC-64M	02-19-21
CURB RAMPS AND SIDEWALKS	RC-67M	02-19-21
PERIMETER CONTROL DEVICES	RC-70M	02-08-19
CHANNEL AND SLOPE PROTECTION	RC-73M	02-08-19
DEWATERING DEVICES	RC-75M	06-01-10
DESCRIPTION	DWG. NO.	APP. DATE

## SUPPLEMENTAL DRAWINGS

										SEAL  DAVID F. WALASAVAGE ENGINEER REG. NO. 19041904		CLIENT & PROJECT CALN TOWNSHIP 253 MUNICIPAL DRIVE THORNDALE, PA MUNICIPAL DR BRIDGE OVER UNT TO BEAVER CREEK CALN TOWNSHIP CHESTER COUNTY, PENNSYLVANIA		 1239 Centre Turnpike Orwigsburg, Pennsylvania 17961 Tel 570.366.9534		TITLE MUNICIPAL DRIVE BRIDGE TITLE SHEET		SCALE AS NOTED		DWG. NO. TS-1	
1 ISSUED FOR BID 11/23/22 JWS NO REVISION DATE BY APP. NO REVISION DATE BY APP.										DATE JULY 2022		SURVEY DATE FIELD BOOK		PROJECT NO. 11193.94		SHEET NO. 1 OF 6		REV.			

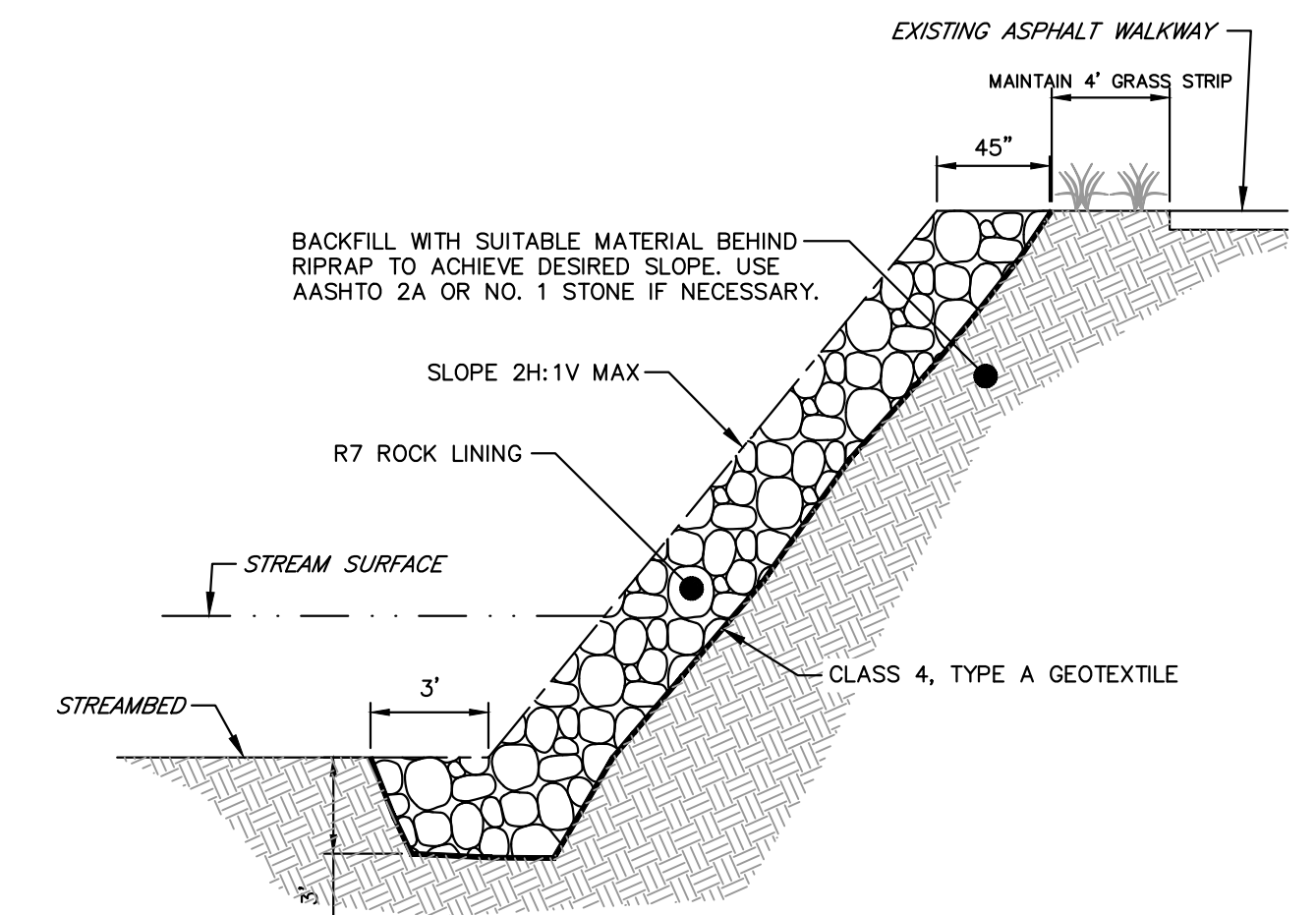
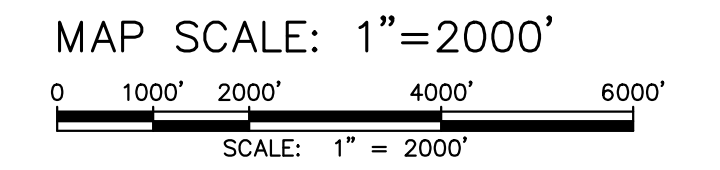
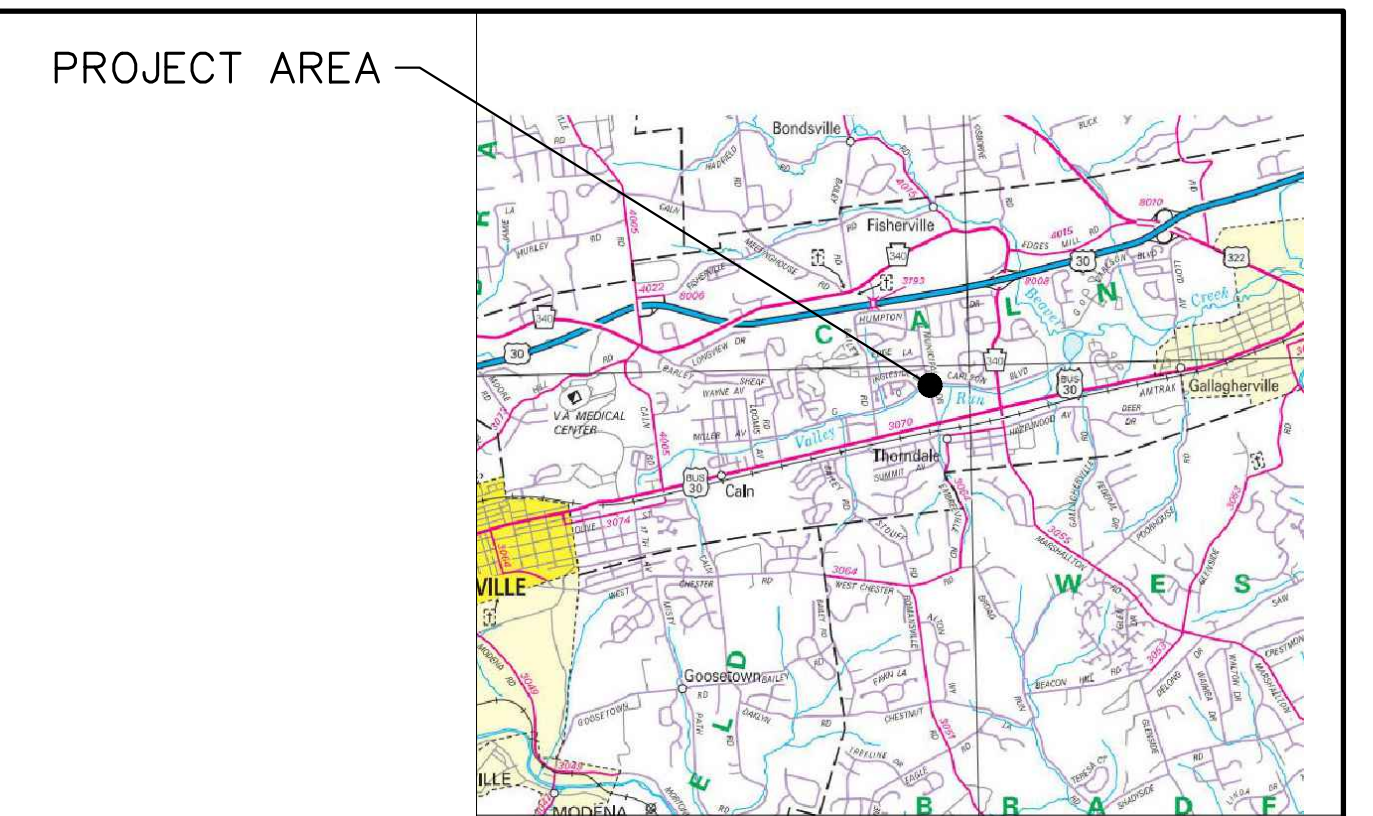
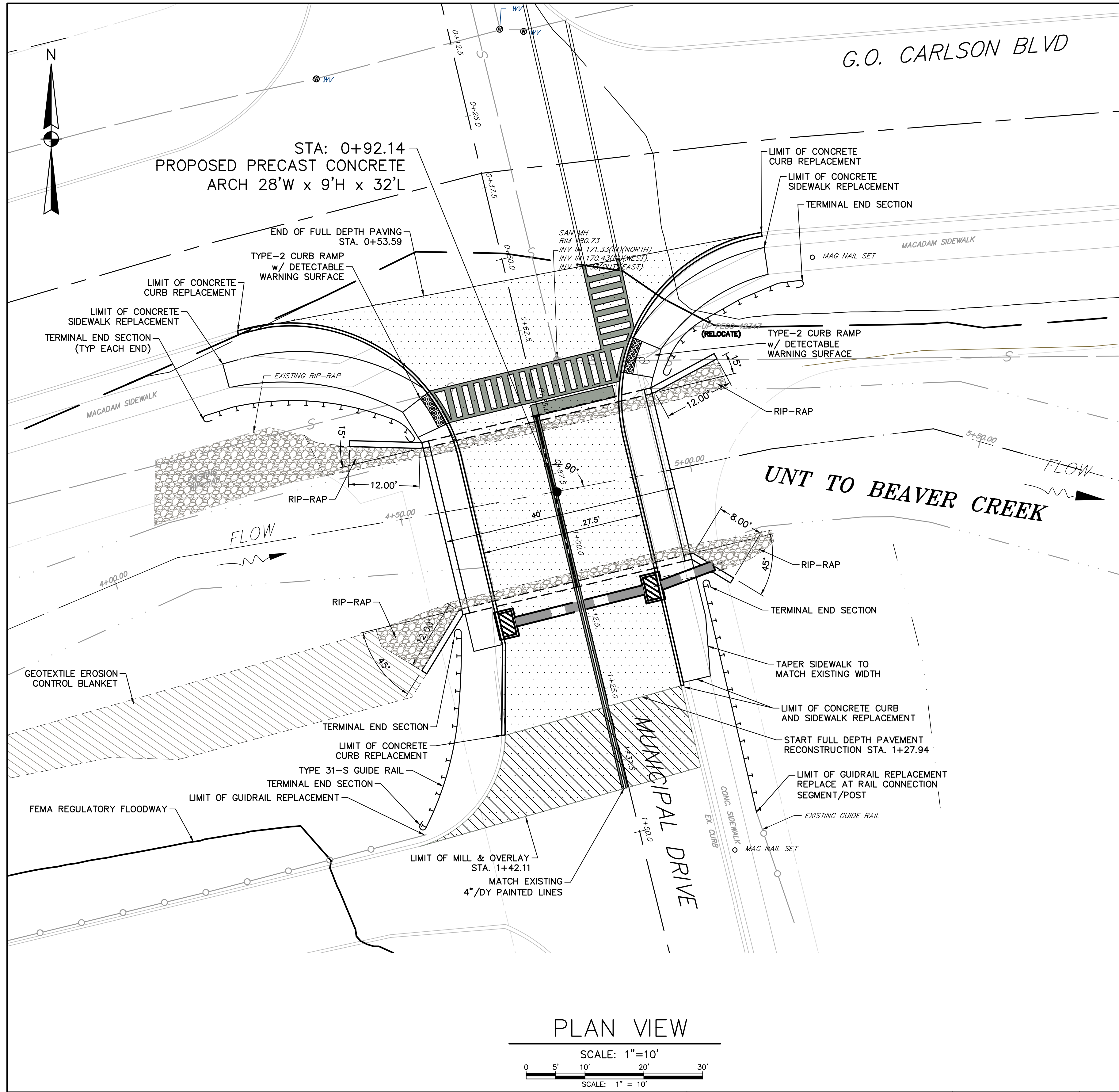










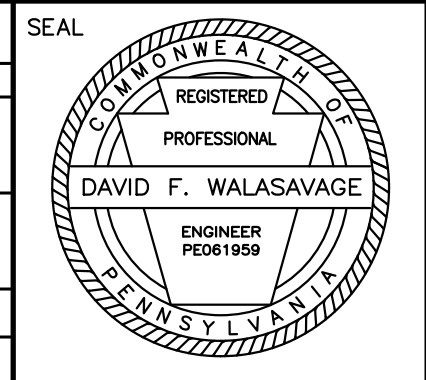


**LEGEND:**

--- MAJOR CONTOURS	→ DIRECTION OF FLOW
--- MINOR CONTOURS	☀ DECIDUOUS TREE
- - - WATER DELINEATOR	☀ EVERGREEN TREE
~ ~ ~ HEDGEROW/TREELINE	180.00 EXISTING SPOT ELEVATION
— CENTERLINE	— PR GUIDERAIL
— RIGHT-OF-WAY LINE	— PR BRIDGE/STRUCTURE
— PROPERTY LINE	— LIMIT OF DISTURBANCE
— EASEMENT LINE	— EARTH BACKFILL
— CURB LINE	— R6 RIPRAP
— STORM SEWER	— SANDBAG
S — SANITARY SEWER	— GRAVEL BAR REMOVAL
W — WATER MAIN	— COMPOST FILTER SOCK
— STREAM EASEMENT LINE	— ROCK CONSTRUCTION ENTRANCE
— EX GUIDE RAIL	— RF
— TYPE "M" INLET	— ROADWAY PAVING AND RECONSTRUCTION
— TYPE "C" INLET	— ROADWAY MILL AND OVERLAY
UP — UTILITY POLE	
WV — WATER VALVE	
— SANITARY MANHOLE	
— VENT	
— MAIL BOX	
— SIGN POST	
— STREET SIGN	

NO	REVISION	DATE	BY	APP.	NO	REVISION	DATE	BY	APP.
1	ISSUED FOR BID	11/23/22	JWS						

DAVE F. WALASAVAGE, P.E.	
DESIGN	CHECKED
D. WALASAVAGE	
DRAWN	CHECKED
S. DOMARATZKY	
DATE	SURVEY DATE
JULY 2022	
	FIELD BOOK

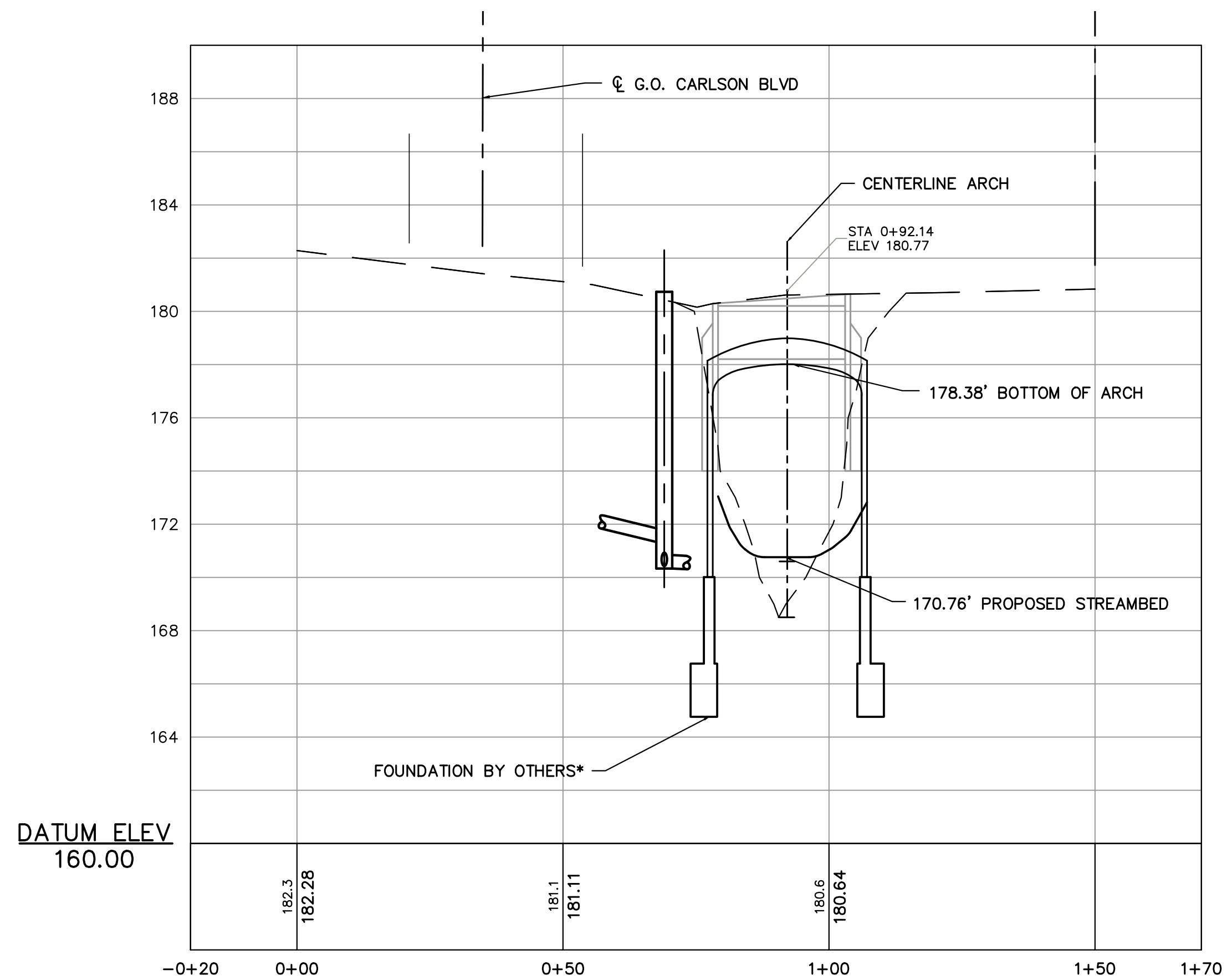


CLIENT & PROJECT  
 CALN TOWNSHIP  
 253 MUNICIPAL DRIVE  
 THORNDALE, PA  
 MUNICIPAL DR BRIDGE OVER UNTO TO BEAVER CREEK  
 CALN TOWNSHIP  
 CHESTER COUNTY, PENNSYLVANIA



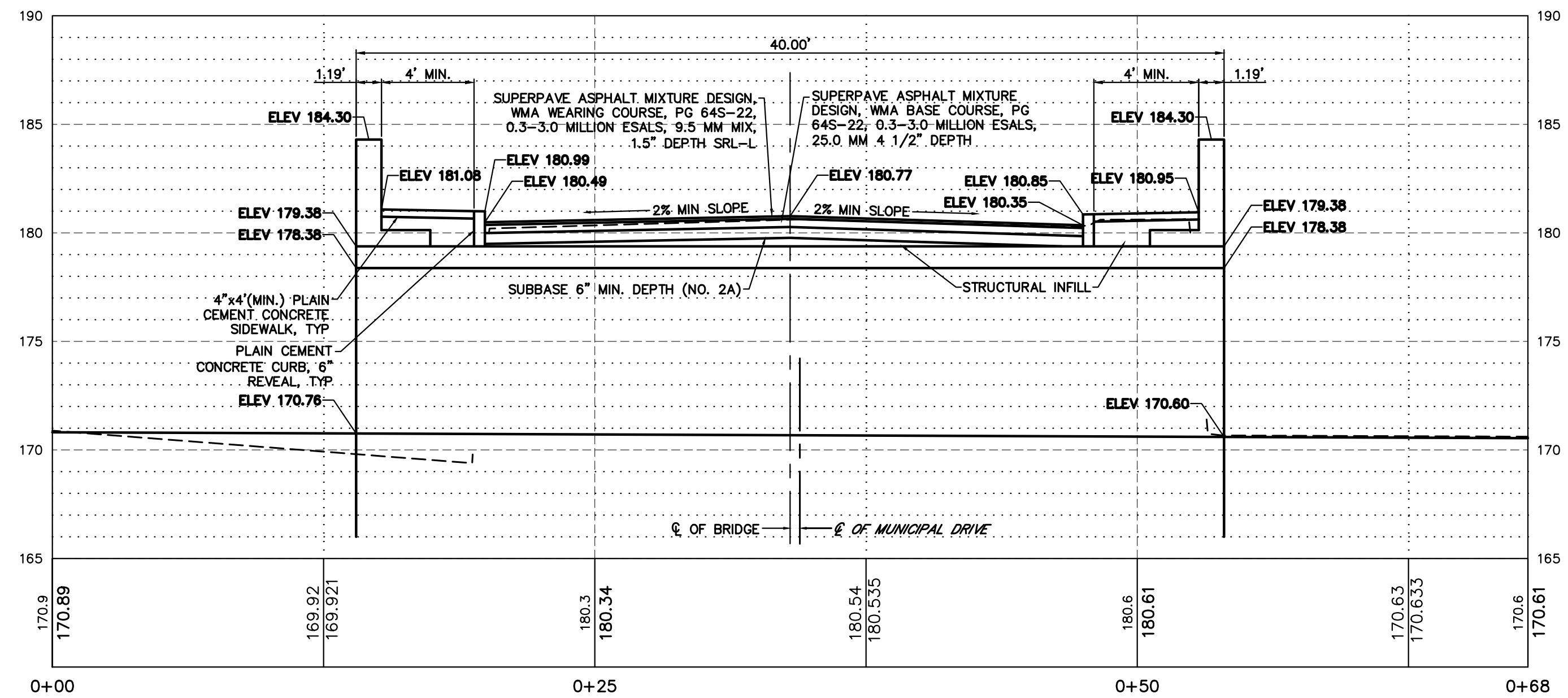
TITLE MUNICIPAL DRIVE BRIDGE SITE PLAN		
SCALE AS NOTED	DWG. NO. C-4	
PROJECT NO. 11193.94	SHEET NO. 4 OF 6	REV.





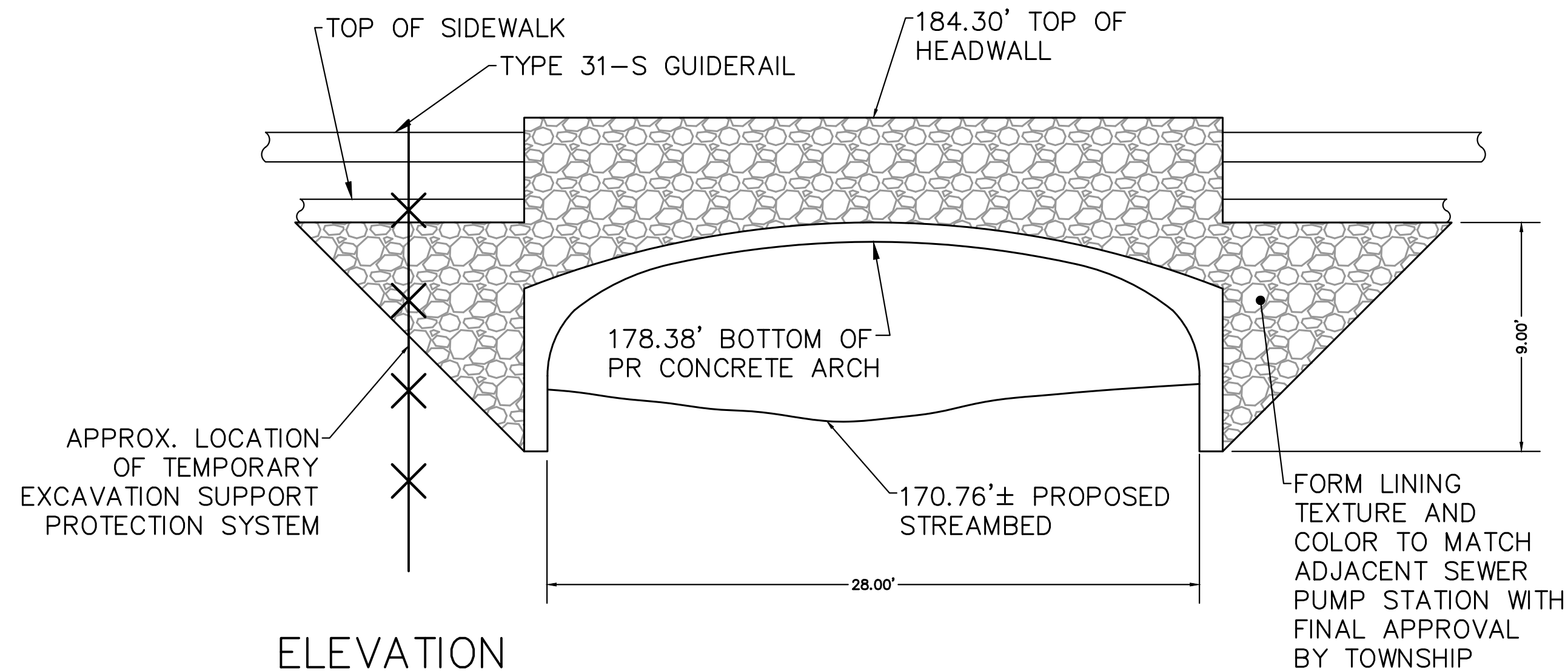
\* COMPACTION GROUTING AS PER PROJECT SPECIFICATIONS.

**ROAD PROFILE**  
SCALE: HORIZ 1" = 25', VERT 1" = 10'



**TYPICAL SECTION**

SCALE: 1" = 5'  
0 2.5' 5' 10' 15'



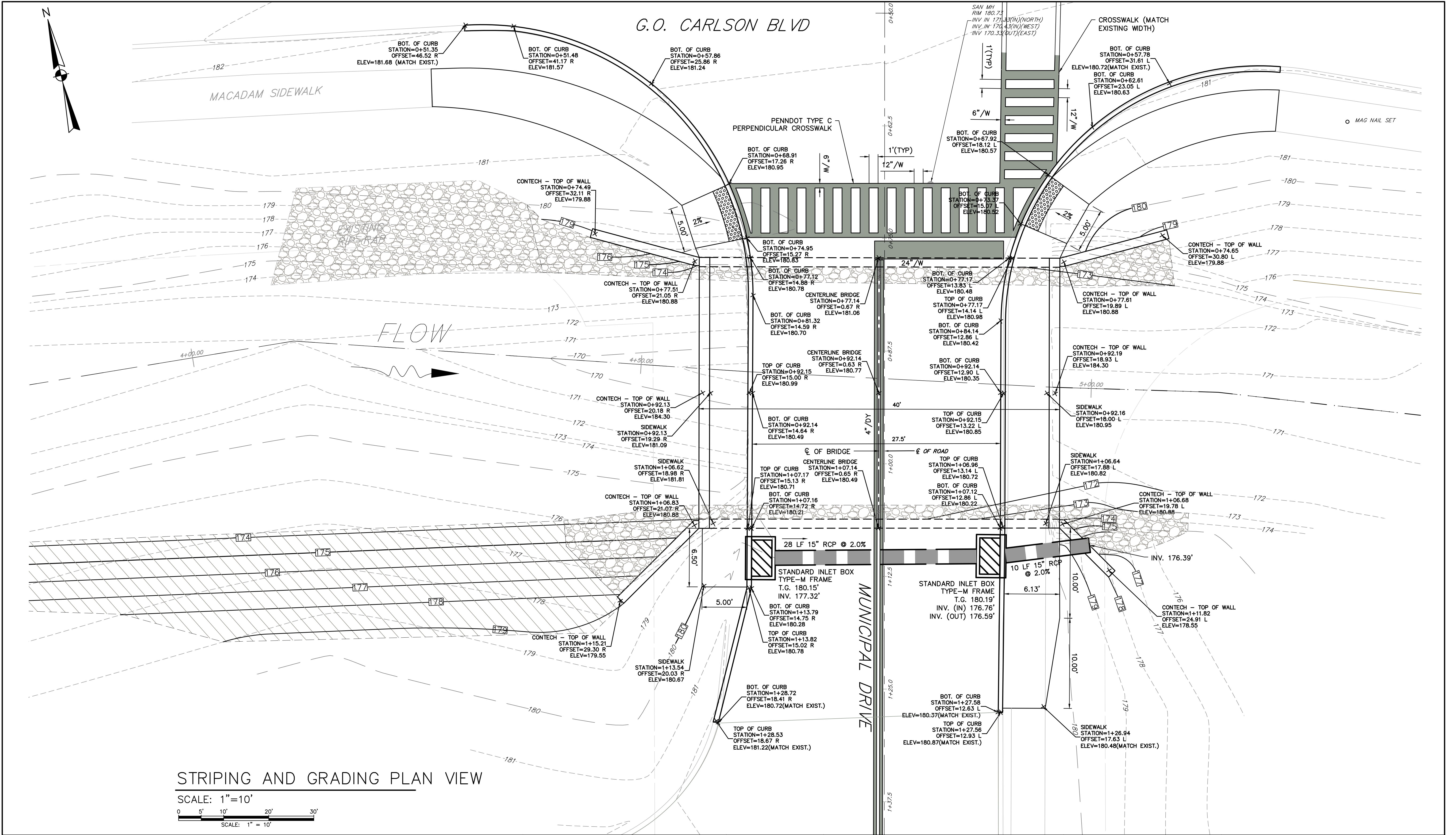
**ELEVATION**

SCALE: 1" = 5'  
0 2.5' 5' 10' 15'

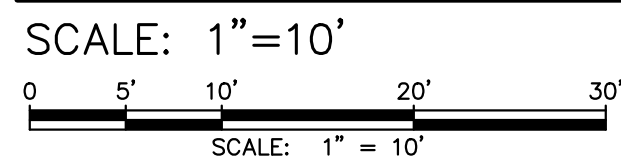
REFER TO CONTECH PRE-CAST CONCRETE ARCH BRIDGE DRAWINGS CT-1 THRU CT-11 FOR ARCH BRIDGE DESIGN CRITERIA AND DETAILS

										DAVE F. WALASAVAGE, P.E. RELEASED BY DESIGN D. WALASAVAGE CHECKED DRAWN S. DOMARATZKY CHECKED DATE JULY 2022 SURVEY DATE FIELD BOOK		SEAL 		CLIENT & PROJECT CALN TOWNSHIP 253 MUNICIPAL DRIVE THORNDALE, PA MUNICIPAL DR BRIDGE OVER UNT TO BEAVER CREEK CALN TOWNSHIP CHESTER COUNTY, PENNSYLVANIA				TITLE MUNICIPAL DRIVE BRIDGE PROFILE, ELEVATION, AND SECTION		SCALE AS NOTED		DWG. NO. C-5	
1 ISSUED FOR BID 11/23/22 JWS										PROJECT NO. 11193.94		SHEET NO. 5 OF 6		REV.									
NO REVISION DATE BY APP. NO REVISION DATE BY APP.																							



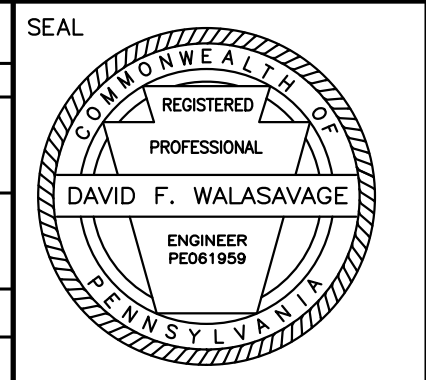


STRIPING AND GRADING PLAN VIEW



NO	REVISION	DATE	BY	APP.	NO	REVISION	DATE	BY	APP.
1	ISSUED FOR BID	11/23/22	JWS						

DAVE F. WALASAVAGE, P.E.	
DESIGN	CHECKED
D. WALASAVAGE	
DRAWN	CHECKED
S. DOMARATZKY	
DATE	SURVEY DATE
JULY 2022	
	FIELD BOOK



CLIENT & PROJECT

CALN TOWNSHIP  
253 MUNICIPAL DRIVE  
THORNDALE, PA

MUNICIPAL DR BRIDGE OVER UNT TO BEAVER CREEK  
CALN TOWNSHIP  
CHESTER COUNTY, PENNSYLVANIA



TITLE			MUNICIPAL DRIVE BRIDGE STRIPING AND GRADING PLAN		
SCALE		AS NOTED		DWG. NO.	
PROJECT NO.		SHEET NO.		REV.	
11193.94		6 OF 6		C-6	